

**ITGAX Antibody (C-term)**  
**Affinity Purified Rabbit Polyclonal Antibody (Pab)**  
**Catalog # AP6986B****Specification**

---

**ITGAX Antibody (C-term) - Product Information**

Application	WB, IF, FC, IHC-P,E
Primary Accession	<a href="#">P20702</a>
Reactivity	Human
Host	Rabbit
Clonality	Polyclonal
Isotype	Rabbit IgG
Calculated MW	127829
Antigen Region	1119-1145

**ITGAX Antibody (C-term) - Additional Information****Gene ID** 3687**Other Names**

Integrin alpha-X, CD11 antigen-like family member C, Leu M5, Leukocyte adhesion glycoprotein p150, 95 alpha chain, Leukocyte adhesion receptor p150, CD11c, ITGAX, CD11C

**Target/Specificity**

This ITGAX antibody is generated from rabbits immunized with a KLH conjugated synthetic peptide between 1119-1145 amino acids from the C-terminal region of human ITGAX.

**Dilution**

WB~~1:1000  
IF~~1:10~50  
FC~~1:10~50  
IHC-P~~1:50~100  
E~~Use at an assay dependent concentration.

**Format**

Purified polyclonal antibody supplied in PBS with 0.09% (W/V) sodium azide. This antibody is purified through a protein A column, followed by peptide affinity purification.

**Storage**

Maintain refrigerated at 2-8°C for up to 2 weeks. For long term storage store at -20°C in small aliquots to prevent freeze-thaw cycles.

**Precautions**

ITGAX Antibody (C-term) is for research use only and not for use in diagnostic or therapeutic procedures.

**ITGAX Antibody (C-term) - Protein Information**

**Name** ITGAX

**Synonyms** CD11C

**Function** Integrin alpha-X/beta-2 is a receptor for fibrinogen. It recognizes the sequence G-P-R in fibrinogen. It mediates cell-cell interaction during inflammatory responses. It is especially important in monocyte adhesion and chemotaxis.

**Cellular Location**

Membrane; Single-pass type I membrane protein.

**Tissue Location**

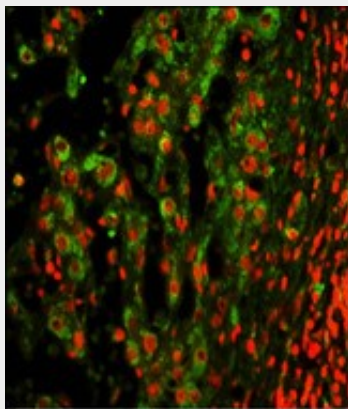
Predominantly expressed in monocytes and granulocytes

**ITGAX Antibody (C-term) - Protocols**

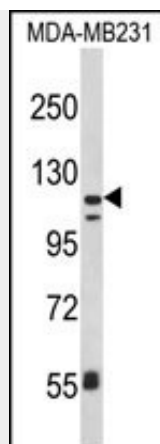
Provided below are standard protocols that you may find useful for product applications.

- [Western Blot](#)
- [Blocking Peptides](#)
- [Dot Blot](#)
- [Immunohistochemistry](#)
- [Immunofluorescence](#)
- [Immunoprecipitation](#)
- [Flow Cytometry](#)
- [Cell Culture](#)

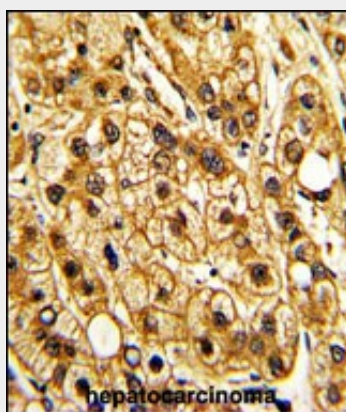
**ITGAX Antibody (C-term) - Images**



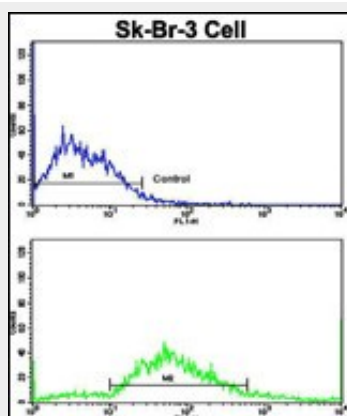
Immunofluorescence analysis of ITGAX Antibody (C-term) with paraffin-embedded human hepatocarcinoma . 0.05 mg/ml primary antibody was followed by FITC-conjugated goat anti-rabbit IgG (whole molecule). FITC emits green fluorescence.Red counterstaining is PI.



Western blot analysis of ITGAX Antibody (C-term) (Cat. #AP6986b) in MDA-MB231 cell line lysates (35ug/lane). ITGAX (arrow) was detected using the purified Pab.



Formalin-fixed and paraffin-embedded human hepatocarcinoma with ITGAX Antibody (C-term), which was peroxidase-conjugated to the secondary antibody, followed by DAB staining. This data demonstrates the use of this antibody for immunohistochemistry; clinical relevance has not been evaluated.



Flow cytometric analysis of SK-Br-3 cells using ITGAX Antibody (C-term)(bottom histogram) compared to a negative control cell (top histogram). FITC-conjugated goat-anti-rabbit secondary antibodies were used for the analysis.

#### ITGAX Antibody (C-term) - Background

ITGAX is the integrin alpha X chain protein. Integrins are heterodimeric integral membrane proteins composed of an alpha chain and a beta chain. This protein combines with the beta 2 chain (ITGB2)

to form a leukocyte-specific integrin referred to as inactivated-C3b (iC3b) receptor 4 (CR4). The alpha X beta 2 complex seems to overlap the properties of the alpha M beta 2 integrin in the adherence of neutrophils and monocytes to stimulated endothelium cells, and in the phagocytosis of complement coated particles.

#### **ITGAX Antibody (C-term) - References**

Bullock, K., et.al., J. Comp. Neurol. 508 (5), 687-710 (2008)

#### **ITGAX Antibody (C-term) - Citations**

- [Mitochondria elongation is mediated through SIRT1-mediated MFN1 stabilization.](#)